

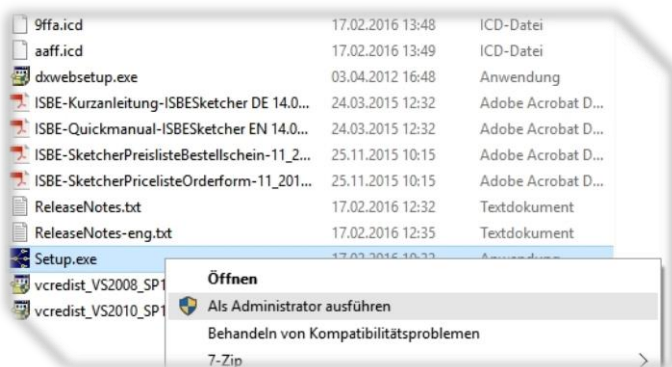
Download and test the Tool-Designer Sketcher 4 weeks for free!

Visit www.ISBE.de/en/ for the free download!

1. Tool-Designer Sketcher – Installation

To install Tool-Designer Sketcher 3D please ensure that the required DirectX components are installed on your computer. The components can be installed with the dxwebsetup.exe file included in the installation package.

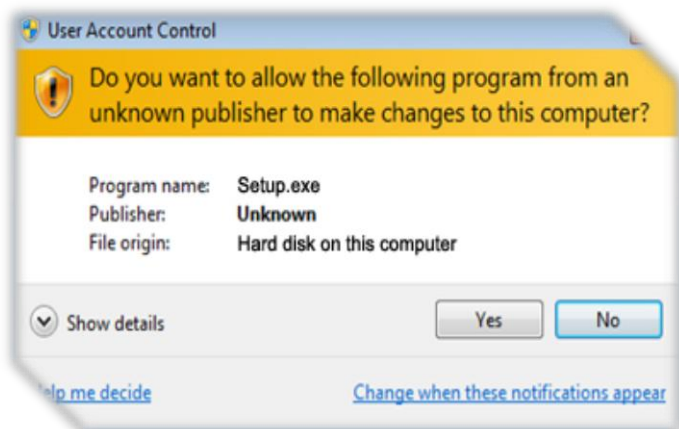
1.1 Run setup as Administrator



1.1.1 Open the folder containing the 'Setup.exe'.

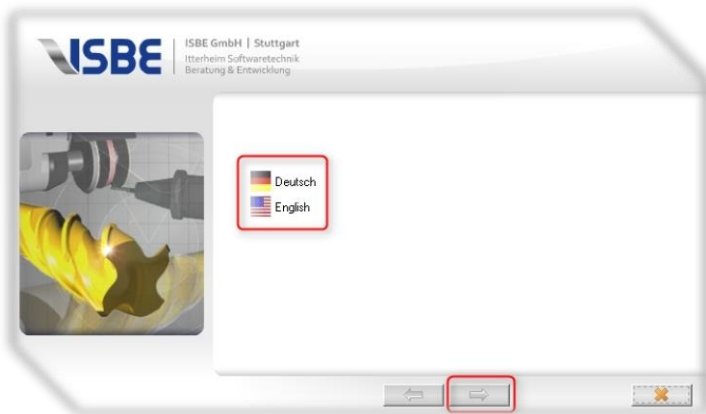
1.1.2 Right click on the 'Setup.exe'.

1.1.3 Select 'Run as Administrator'
(Windows Vista, Windows 7).



1.1.4 Confirm the Windows security question with 'yes' in order to continue with the installation process
(Windows Vista, Windows 7).

1.2 Install Tool-Designer Sketcher



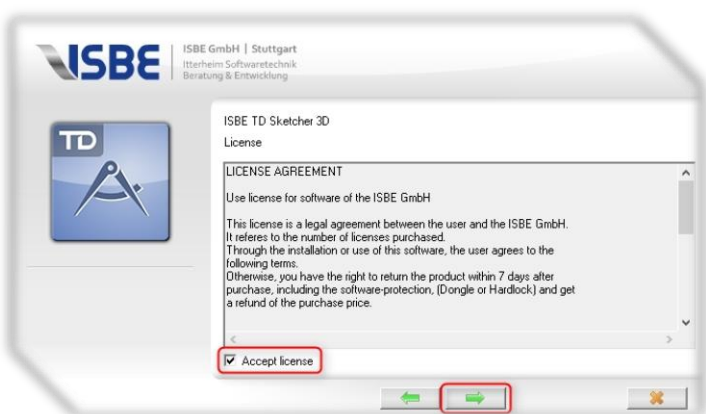
1.2.1 Select the Tool-Designer Sketcher language.

1.2.2 Confirm by clicking the right arrow.



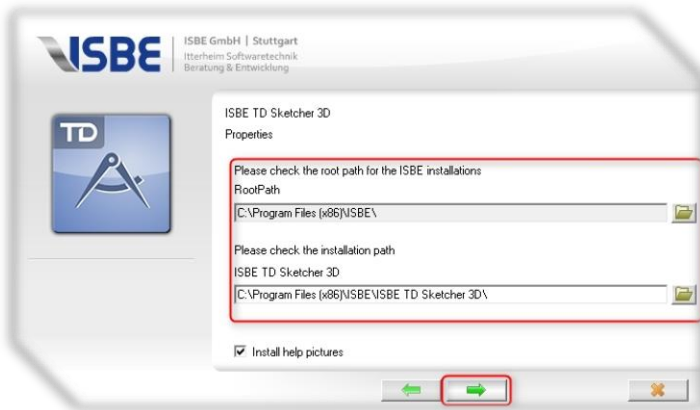
1.2.3 Select the type of installation (Viewer only installs TD Sketcher to visualize the project files).

1.2.4 Confirm by clicking the right arrow.



1.2.5 Accept the license agreement by marking the box.

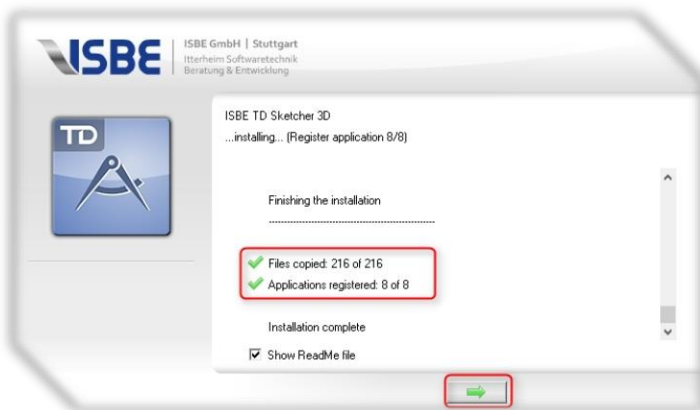
1.2.6 Confirm by clicking the right arrow.



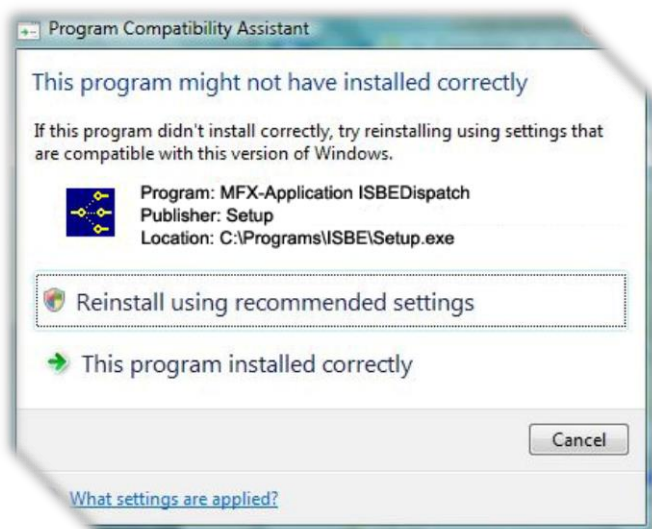
1.2.7 Select the installation path. We recommend keeping the preset path.

1.2.8 Confirm by clicking the right arrow.

1.2.9 Tool-Designer Sketcher will be installed now.



1.2.10 Check the status report after the installation has finished. If all data has been copied and all modules have been registered, the installation was successful. In the case of missing files, please check if the setup has been run as an administrator and that you have access rights on the installation path.



1.2.11 In some rare cases Windows does not detect that the installation has finished. If point 1.2.10 did not show any errors confirm that Tool-Designer Sketcher has been installed properly.

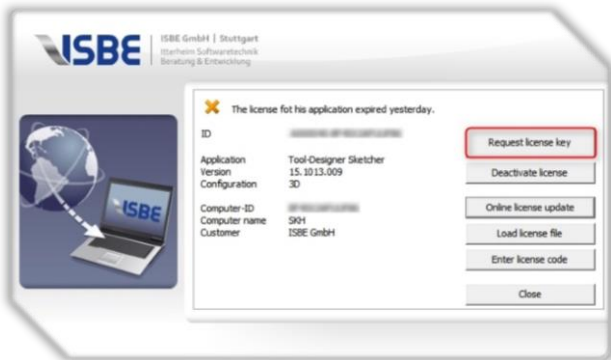
If you have any questions or need support, contact our support team.

Phone: +49 711 223298 70
E-Mail: sales@isbe.de

2. Tool-Designer Sketcher – Licenses

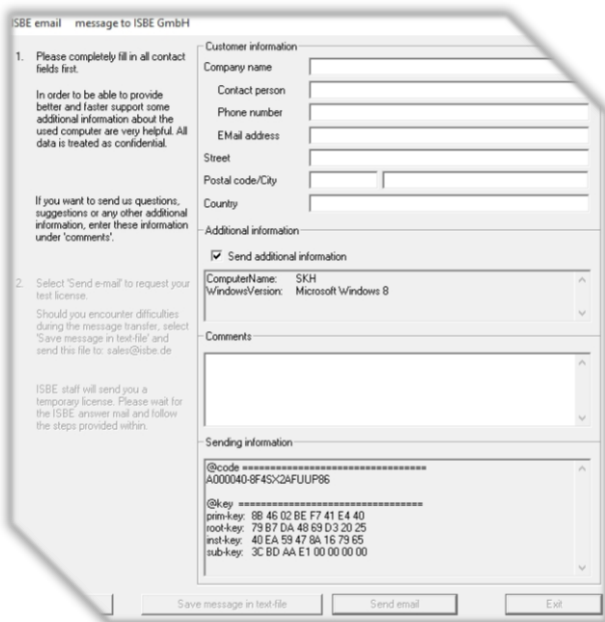
If you need more than the demo contents for your evaluation of the Tool-Designer Sketcher, we offer a one-month test period of the complete Tool-Designer Sketcher free of charge and without any obligation. After installing the Tool-Designer Sketcher, follow these steps for your free test license:

2.1 Request license



2.1.1 Start the Tool-Designer Sketcher.

2.1.2 Click 'Request test license'.



2.1.3 Please, complete the form and click on 'Send email'.

2.1.4 Alternatively you can save the information as a text file and send it manually to: sales@isbe.de.

2.2 Activate license

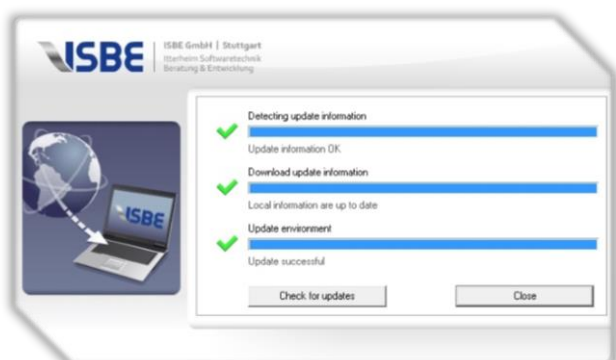


2.2.1 After receiving the confirmation mail from ISBE click 'Online license update'.

2.2.2 The automatic online update will now update your license. Click 'close' to start the Tool-Designer Sketcher.

2.2.3 In the case, there is no open online connection available, save the HTML file attached to the confirmation mail to your PC and click 'Load license file'.

2.2.4 Select the saved license file and confirm. Close the license information in order to start the Tool-Designer Sketcher.



In some rare cases, the Tool-Designer Sketcher might still run in the demo mode. In this case, please restart the Tool-Designer Sketcher.